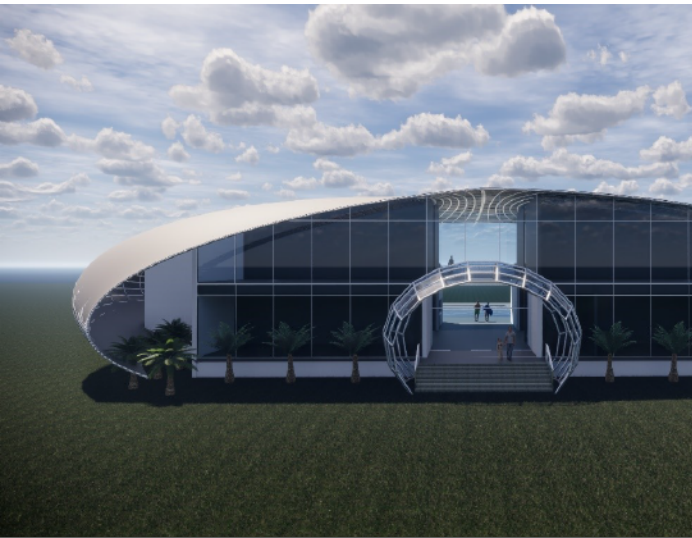




Advanced Mechanical & Electrical Services Ltd



Your Leading MEP Engineering Consultant



6, Hurdowar Street,
Rose Hill, Mauritius



+230 465 7052
+230 5762 8940



admin@amesltd.com



<http://amesltd.com/>

Engineering Excellence

Engineering solutions are a vital part of building a good home, with a bespoke approach ensuring success in the long run. The team at Advanced Mechanical & Electrical Services Ltd have established themselves as leaders when it comes to offering these services. In BUILD's Homebuilder Awards 2022, the firm was named Best MEP Engineering Company – MEA. We dig a little deeper to discover how the team achieved this remarkable accolade.

Established in 2004, Advanced Mechanical & Electrical Services has become a name to remember when it comes to working in the building services sector. With a clear vision that includes thinking differently and innovating, the team's reputation has reached beyond the MEA region and has attracted attention from an international market.

The breadth of the team's abilities has been a key part of how the team has achieved success, offering incredible value in their engineering solutions. The focus of the company has always been on MEP engineering, and this has recently been filtered through a lens of power system and renewable energy. These sectors are showing prospects and growing in demand. The team's professional approach in this respect has not only allowed them to serve the needs of their customers effectively but has guaranteed their place as a leader on the global stage.



The firm has worked with both the private and public sectors, treating each project as unique in its own right. The needs of every client, regardless of their background, is distinctive and requires careful consideration before a design brief is started. This brief is a vital part of the development process, establishing the specifics of a project and narrowing down its aims. The potential route of innovation can also be found here, with the research department playing an important role in the development of any project. It's not enough to offer the same old solutions. New ways of working are vital to securing success.

Naturally, this innovation is most easily demonstrated through the work of the talented team. The staff at Advanced Mechanical & Electrical Services are thoroughly committed to the values that have made the business a success, always looking at the latest technologies to secure new degrees of success. A close-knit working environment has been incredibly important to the way in which Advanced Mechanical & Electrical Services works, with research pushing forward every aspect of the business.



The outbreak of COVID-19 across the globe has had a major impact on the construction industry, with the price of raw materials rising considerably. This has increased operational costs too, which has forced some of the plans developed by the Advanced Mechanical & Electrical Services team to change. To cope with the crisis as it unfolds, the team have adopted a value engineering approach to meet the exigencies of their projects.

When we look at the success of Advanced Mechanical & Electrical Services, we look at a firm that is always pushing forward to bold new heights. With plans to expand their global presence, there are new challenges ahead for this incredible team, but also amazing possibilities. Their assistance has supported many to create the house of their dreams.



Company: Advanced Mechanical & Electrical Services Ltd
Name: Abdul Ahad Jhumka
Email: admin@amesltd.com
Web Address: <http://amesltd.com>

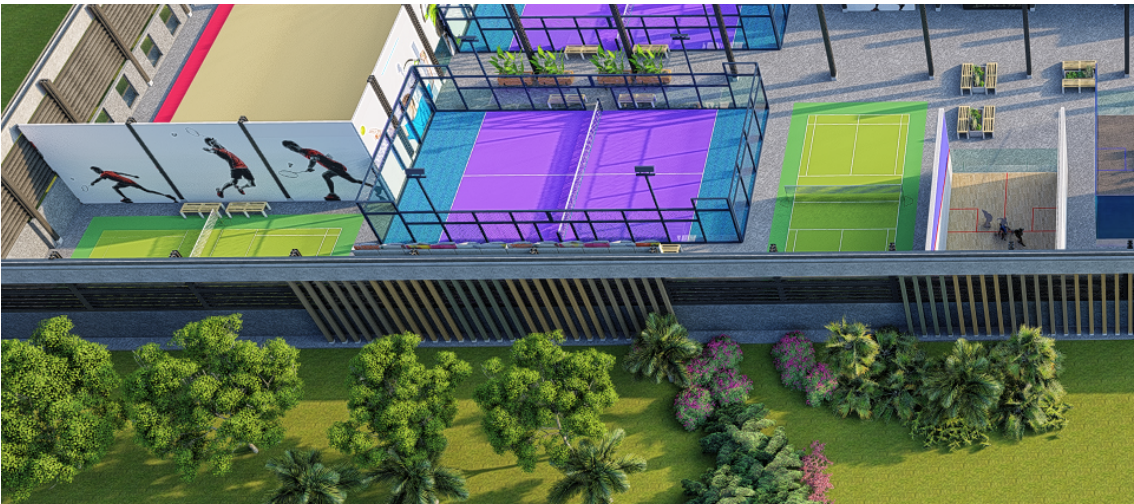


ABOUT AMES LTD

INTRODUCTION

Advanced Mechanical and Electrical Services Ltd (AMES Ltd) is an engineering consultancy firm established in 2004 by Mr. Ahad Jhumka, and has since been a fast expanding company that specialises in the building services, power sector and infrastructure sectors through the following activities:

- Design of Mechanical, Electrical and Plumbing (MEP) services for new and refurbished projects including data and WIFI network including Project Management & Contract Administration
- Dynamics in power system and integration of renewable energy
- Close supervision and quality control of construction sites
- Provide MEP cost management and control including claim dispute together with BOQs and tender documents
- Liaising with local authorities in view of obtaining the relevant clearances and permanent connection on site
- Working in close collaboration with specialized local and international consultants, suppliers and contractors for additional expertise.



PROJECTS WE HANDLE

AMES Ltd has an extensive versatility and know-how through the different types of project that It has handled up to date including:

01

> Hotel and Resorts

06

> Industrial developments

02

> Sports complexes

07

> Low cost housing

03

> Office centers

08

> Commercial complexes

04

> Individual dwellings

09

> Power Plant

05

> Residential complexes

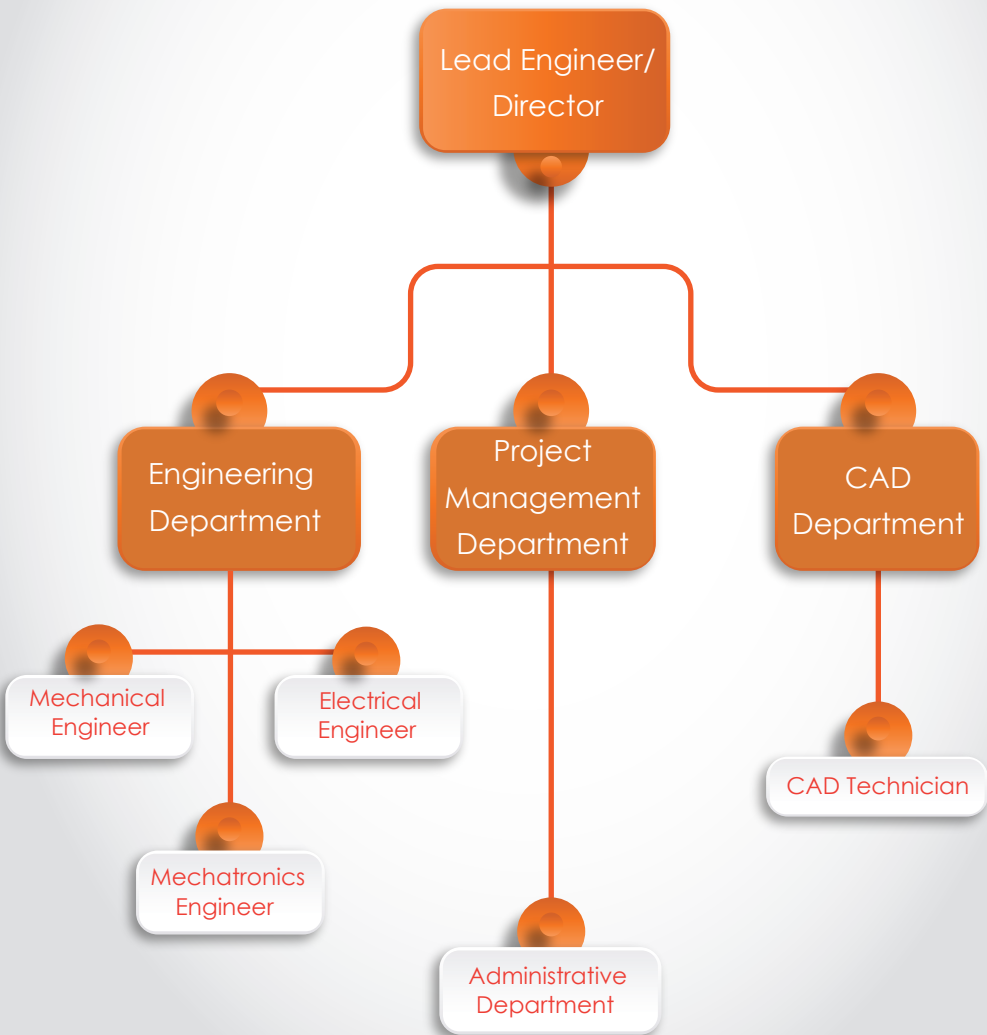
10

> Warehousing Facilities/
Cold Room



OUR WORKFORCE

At AMES Ltd, we prefer quality over quantity and our staff are professionals and well-experienced in their relevant fields. To better serve our precious clients and to be able to cope with the workload, we have inter-related departments whereby each staff has his/her utmost importance.



OUR REFERENCE PROJECTS

RESIDENTIAL ESTATE SCHEME (RES)

Throughout the course of our long and successful track, we have completed numerous RES projects of the highest standard. Below are some of our pride in the RES sector:

Les Villas de Cascavelle – comprises of 13 luxury villas, a tennis court and gym – Completed in 2011 with a project value of around Rs. 130M (around USD 3.7M*)



Les Villas Intemporelles at Pereybere – comprises of 16 luxury villas and a SPA – Completed in 2022 - Estimated project value off Rs. 150M (around USD 4.3M*)

Black Rock Villas at Riviere Noire – comprises of 7 luxury villas and a gym – Completed in 2018 – Estimated project value of around Rs. 65M (around USD 1.9M*)



RES Luxury apartments for Imperial Garden – Construction in progress – Estimated project value of Rs. 800M (around USD 23M*)

INDIVIDUAL AND COMBINED RESIDENTIAL PROJECTS

We are a versatile company that can deal with large residential complexes and at the same time cater for the specific and intricate needs of individuals in the development of their dream house.)

Luxurious house at Floreal for the RAWAT family

– Completed in 2009 with a project value of Rs. 50M (around USD 1.4M*)



LE MERITT ELLIPSIS – comprises of 250 high class apartments – Completed in 2022 – Estimated project value of Rs. 450M (around USD 12.8M*)

EPERVIER Project – comprises of 66 high class apartments – Completed in 2011 with a project value of Rs. 150M (around USD 4.3M*)



High class apartments for EDENROCK PROPERTIES LTD through out the island ranging from beach front apartments with panoramic views to mixed-use developement

Completed SALINEO at Tamarin, OTERA at Trou aux Biches, WEST BEACHES at La Preneuse and CLOS D'AZUR at Pereybere with a combined project value of Rs. 200M (around USD 5.7M*)

Construction in progress for EASTROCK at Roches Noires, TIDES and SALINEO 2 at Tamarin



HOTEL AND RESORTS

We have also dealt with numerous resorts and hotel projects, with mainly quality engineering surveys and full MEP package in the refurbishment of same.

We were appointed as an independent surveyor to assess the electrical installation for the VERANDA group of hotels and propose remedial action for the upgrading of the electrical network



Design and supervision of the full MEP package for the renovation of Le Pearle Beach Hotel at Flic en Flac

Consisted of 80 rooms with a project value of Rs. 200M (around USD 5.7M*)

Renovation of Jalsa Beach Hotel at Poste La Fayette and upgrading to a 4 star hotel – Consisted of 80 rooms with Spa, Sauna etc. with a project value of Rs. 250M (around USD 7.2M*)

Renovation of the Calodyne Hotel at Calodyne – Consisted of 50 rooms with a project value of Rs. 50M (around USD 1.4M*)



Survey of the existing MEP installation for ATTITUDE RESORTS GROUP and DOMAINES DES ALIZEES

OFFICE COMPLEXES

Throughout the existence of AMES Ltd, we were called upon to work for numerous office projects for esteemed clients and we have responded wonderfully to attend to their needs and vision.

HENESSY COURT at Port-Louis *14 floor building -*

Completed in 2011 with a project value of Rs. 250M (around USD 7.2M*).



Renovation of RAMDENEE headquarters at Phoenix –

Construction in progress – Estimated project value of Rs. 25M (around USD 715k*)



ITSOLVZ office at Ebene –

Completed in 2012 with a project value of Rs. 15M (around USD 425k*)

Office complex at Plaine Verte -

Completed in 2012 with a project value of Rs. 50M (around USD 1.4M*)



SALINEO 3 project at Tamarin for *EDENROCK PROPERTIES LTD*

Construction in progress – Estimated project value of Rs. 75M

SHOWROOMS

KALACHAND showroom at Pailles –

Completed in 2012 with a project value of Rs. 600M (around USD 17M*)



Showroom for MANJOO in Port Louis –

Completed in 2012 with a project value of Rs. 30M (around USD 800k*)



Car showroom for ELDO MOTORS at Pailles –

Completed in 2014 with a project value of Rs. 15M (around USD 425k*)

Commercial Centre at Phoenix for ALDREX SUPPLIERS –

Completed in 2015 with a project value of Rs. 25M (around USD 715k*)



Full MEP design for a call centre company in MINDSPACE building in Ebene –

Completed in 2012 with a project value of Rs. 5M (around USD 145k*)

SPORTS COMPLEX

Multi Purpose Sports Complex for JOHN KENNEDY COLLEGE at Beau-Bassin. The complex has 3 badminton court, 1 audiovisual room and stage for speeches. The project was a turnkey project launched by the Ministry of Education and Human Resources. The project was successfully completed in 2015 with a project value of Rs. 30M (around USD 800k*). On this project we have worked with respected partners such as EDCC company Ltd, SERVANSINGH JADAV & PARTNERS and DINESH RAMPHUL ARCHITECTS LTD



PCF is a dynamic fast growing Pentecostal church which worships in very tight rented spaces in Coromandel. The vision of this project was to put up a community centre in Coromandel itself to open the church to the community and provide decent worship conditions to its members. The proposed auditorium provides accommodation of a capacity of 2200 seats together with spaces for shops and offices. Parking facilities are available on site and in a semi-basement whereby some of the services provision have been catered for. The project is till under construction with an estimated construction cost of Rs. 150M (around USD 5M*)



MEDICAL HUB

We have also sound knowledge in the field of medical sector. We have been involved in the setting up of a medical home care in Curepipe which comprises of kitchen, medical rooms, laundry, conference rooms. We have also been the Design Reviewer for a 600 beds hospitals in Comoros Island.



We have also acted as Design Reviewer for a 600beds hospital in Comoros Island.



MIXED USE DEVELOPMENT

AMES Ltd has an extensive experience in mixed use development project. We are presently the MEP consulting engineering firm for a 10,000 sq meters of development in Grand Baie . The project consists of showroom, hotel, offices, gymnasium and sporting facilities and offices, gymnasium and sporting facilities.



Similar experiences on the mixed use development project are Tamarin Commercial Hub also known as Salineo 3 and Winners Pereybere/ Burnas Beach Resorts.



POWER PLANT : *Extension of Pointe Monnier Power Plant in Rodrigues*

AMES Ltd has been working with renowned company for this project and was acting as the project coordinator. This project has enabled us to get accustomed with handling equipment, installation of heavy machineries and power transmission.

AMES Ltd has also been involved in the transient stability study during the proposed setting up of a combined cycle gas turbine power plant and wind power plant.



LAND PARCELLING AND INFRASTRUCTURE WORK

AMES Ltd has a successful track record in the land parcelling and infrastructure work. We have completed many projects of such nature such as 1. Naturo Villa - 62 plots 2. Domaine St Louis 80 plots 3. Morcellment at Allée Brillant - 12 plots 4. Société Les Palmiers - 15 Plots 5: RKM Ltd - 19 Plots



SMART DEVELOPMENT

AMES Ltd is currently involved in the development of smart projects in Jubail in Saudi Arabia. We form part of a consulting team that provide necessary support to the Royal Commission of Jubail for making it a smart city. We are responsible for the following projects in Saudi Arabia:

- 56,000 hectares recreational park
- Riyadh Metro
- Al-Faisalalah Hotel
- 500m2 of Exhibition Center

AMES Ltd has also the support from foreign consultancy companies for specialized project, namely

- Meinhardt (Singapore)
- Advisian (Spain, Australia and Republic of South Africa).
- Both are multi international companies present in various parts of the world.



PROJECTS IN HAND

Metropolis – Apartment project in Sodnac.

We have been awarded 114 apartments project in the heart of Sodnac. Project consists of 3 basements, ground and 14 storeys. We provided additional expertise facilities in the development of computational fluid dynamics (CFD) for the smoke extraction system in the basement.



Additional projects with the same Client

- Metropolis Phase 2)
- The Falls
- Kensington Square 2

Plaine Verte Arena

We have been appointed to provide a full scope of MEP services. The project in itself is very challenging with installation of acoustics, audiovisual and sports lighting facilities.



Warehousing Project

Our team is contributing to the development of Jin Fei with warehousing development including cold room facilities. We are also involve in the setting up of a paper recycling plant.



PDS

- Osiris
- Ilanga
- Aux Portes du Rempart
- Excellia Properties



Government Projects

- Renovation of Idrice Goomany completed in 2022
- Triolet Arena



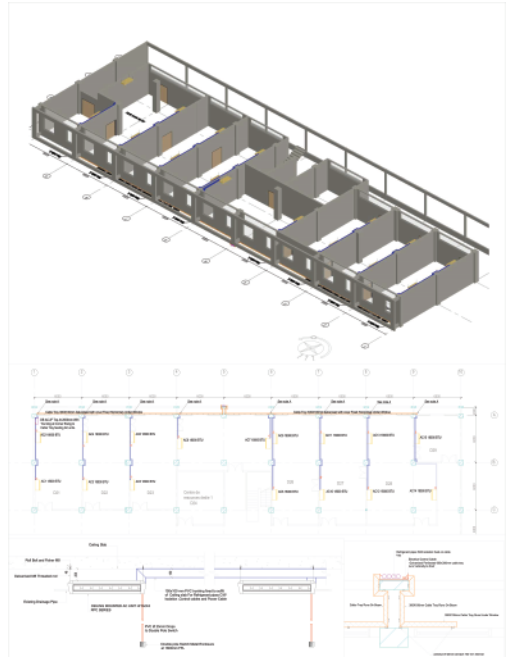
RESEARCH DEVELOPMENT

At Ames Ltd, we believe in innovative technologies. To this end, we have developed a research department in specialized field for working towards new trend and technologies which will bring Ames Ltd at the fore front.

Our first research work being carried out by our professional staff is
"Power System Dynamics for better integration of
renewable energy sources"

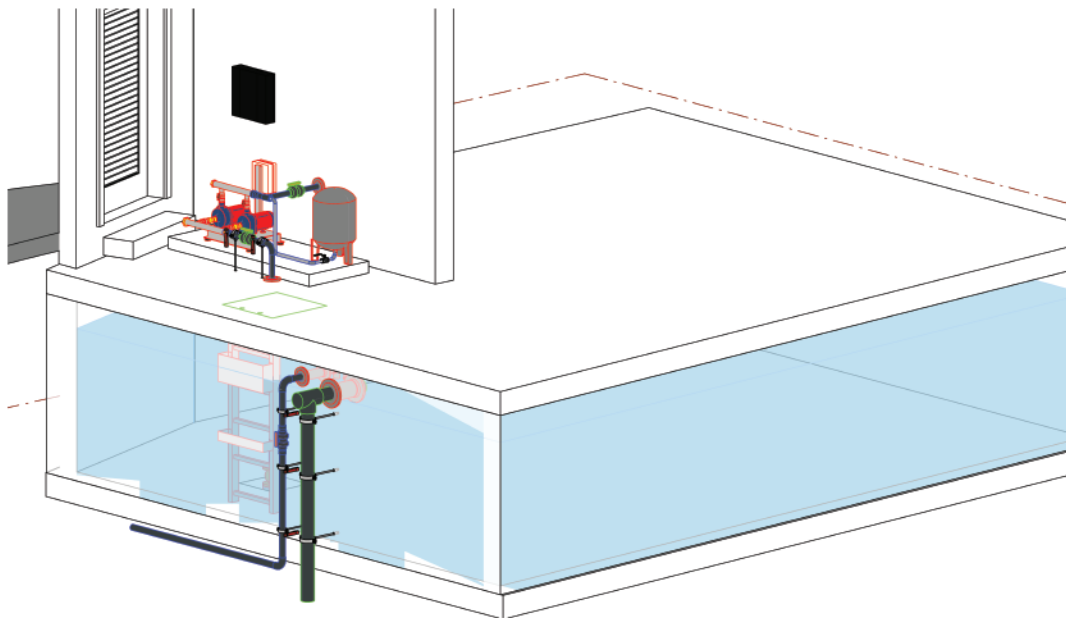
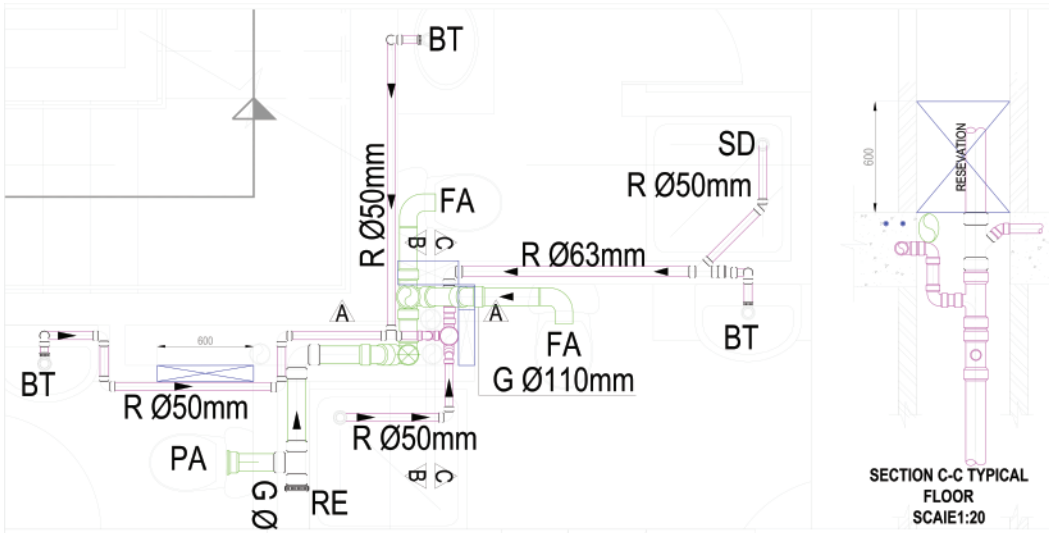


Electrical Plan



Design By: JEC Drawn by: JEC

Plumbing Plan



OUR ESTEEMED COLLABORATORS

ARCHITECTS

- Pravin Desai Architects
- Teelock Associates Ltd
- J&A Architects
- Ahmed Rawat Architect
- KP Architect
- MORPHOS Architects
- T-Square Ltd
- Zac Associates Ltd
- Jean Pierre Liu Architect
- Ramphul Associates Ltd
- Luis Cheong Wai Yin
- Philippe Choo Architect
- Sobnack Architect
- Pixel Creations
- Urban Architects
- YR Designs Ltd

PROJECT MANAGERS

- OCAL Ltd
- ONG SENG GOBURDHUN
- Chutur & Partners Ltd
- Servansingh Jadav & Partners Consulting Ltd
- Limbada & Limbada
- Juddoo Consulting Ltd
- Mooroogan & Associates Ltd
- Subraconsult Ltd
- Ragoo Associates Ltd
- Matrix Project Services
- Lynx Consulting Ltd

OUR ESTEEMED CLIENTS

- RAMDENEE Group
- SIMS Group of Companies
- Penial Christian Fellowship
- Villas de Charme
- Black Rock Luxury Ltd
- Les Terrasses de Martello
- Les Villas de Cascavelle
- AKGM
- SAMLO Group
- Henessy Court Properties
- J. Kalachand
- BDO
- Ministry of Education and Human Resources
- Ministry of Youth and Sports
- EDENROCK Properties Ltd
- EPERVIER Company Ltd
- Calodyne sur Mer Ltd
- Hotel le Pearle Beach
- Hotel Jalsa Beach
- ITSOLVZ
- MANJOO
- Star Promoters Ltd
- Groupe Robertson Patrimoune
- And last but not the least, all the individual clients

THANK YOU



Contact Us



+230 465 7052
+230 5762 8940



6, Hurdowar Street,
Rose Hill, Mauritius



admin@amesltd.com



AMES



<http://amesltd.com/>